

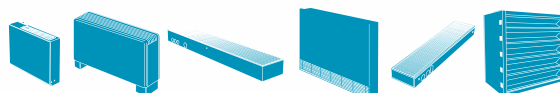


**jaga**

# MICRO CANAL

TOP  
PERFORMERS

**BROCHURE** £ UK 2013





jaga

TOP  
PERFORMERS  
**LOW-H<sub>2</sub>O**

## MICRO CANAL

Maximum warmth, minimum dimensions

The latest Jaga trench heating solution is only 6 cm high and 13 cm wide. With small, but powerful dynamic Low-H<sub>2</sub>O heat exchangers and super-quiet fans that are no wider than a thermostatic radiator valve, it creates immense power. Micro Canal combines minimalist aesthetics and architectural freedom with a power that breaks all temperature records! Micro Canal integrates harmoniously with any interior. This provides every architect, designer or engineer the greatest possible design freedom on any project without making any compromises for the heating system.

By using the latest EC motors, Micro Canals consume up to 50% less electricity than traditional motors.





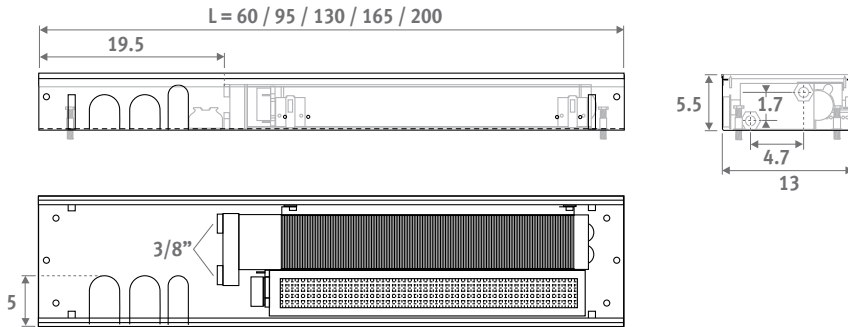
MICRO CANAL

# MICRO CANAL

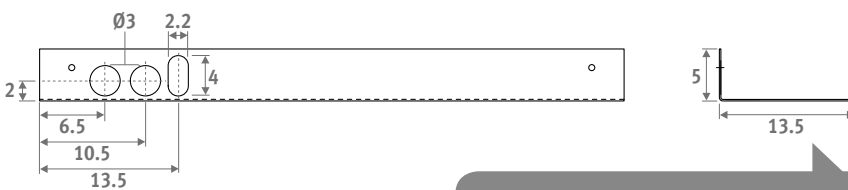


## DIMENSIONS (in cm)

### Inner casing



### Outer casing



All dimensions +/- 0.2cm

Building in-opening: width 14 cm!

## ORDERING CODE

| code   | height | length | type | grille | colour |
|--------|--------|--------|------|--------|--------|
| MIRF . | 006    | 060    | 14 . | /SSS   | /XXX   |

fill in colour code with laquered grille

## STANDARD DELIVERY

- stainless steel grille
- outer casing with anchorage elements,
- polyethylene-protective mounting block(s) and three connection holes on the left hand side
- pre-assembled internal duct with stainless steel grille support
- tangential activator(s) 24 VDC and integrated stainless steel filter
- dynamic heat exchanger with flexible 1/2" stainless steel connectors (L 15 > 25 cm)
- height adjustment with fine adjustment for alignment with the finished floor.
- automatic activator on/off switch by means of temperature sensor

With energy efficient EC motor

## HYDRAULIC CONNECTION

- one-sided 2-pipe connection on the left
- always install Micro Canal with the heat exchanger on the window or wall side
- 2 x 1/2" stainless steel hose included
- allow extra space for curtains, in between the window and the Micro Canal.
- The heat exchanger must always be kept accessible for maintenance purposes
- if the appliance is not mounted flat on the floor, the space between the bottom of the appliance and the floor should be filled with a stable filler material.

## ELECTRIC CONNECTION

- clamp connector for electrical connection 24VDC to the left, to be connected via external power supply. Install a thermostat with a potential-free contact to control the water supply with the help of a zone valve. Micro Canal automatically switches on the activators via a temperature sensor.

## COMPOSITION

Stainless steel grille(s).

Stainless steel air filter

Tangential EC thermic activator(s)

Dynamic heat exchanger

Stainless steel flexible connections 1/2"  
Length 15 cm

Inner casing  
with stainless steel  
grille support

Fine adjustment  
up to 1 cm, for a perfect  
alignment with the  
finished floor

Outer casing

Anchoring of the inner  
housing after fine adjustment

Connections always on the left

Anchorage elements / height control from 6.2 to 8 cm

# MICRO CANAL

MIRF.HHH LLL TT/XXX



| H L T      | HEATING             |                     |                     | ACTI-VATORS | SOUND PRESSURE* | POWER CONS. | AIR FLOW                   | WATER FLOW |           |               |
|------------|---------------------|---------------------|---------------------|-------------|-----------------|-------------|----------------------------|------------|-----------|---------------|
|            | Watts<br>75/65/20°C | Watts<br>55/45/20°C | Watts<br>45/38/20°C | quantity    | dB(A)           | Watts       | with clean filters<br>m³/h | litre/h    | £<br>/SSS | £<br>/SSC/XXX |
| 006 060 14 | 390                 | 234                 | 167                 | 1           | 18.0            | 1.3         | 34                         | 34         | 642.10    | 706.30        |
| 095        | 780                 | 468                 | 334                 | 1           | 21.0            | 1.7         | 57                         | 67         | 942.90    | 1037.20       |
| 130        | 1170                | 702                 | 500                 | 1           | 22.8            | 2.0         | 101                        | 101        | 1258.90   | 1384.80       |
| 165        | 1560                | 936                 | 667                 | 2           | 24.0            | 3.4         | 134                        | 134        | 1579.80   | 1737.80       |
| 200        | 1950                | 1170                | 834                 | 2           | 25.0            | 3.7         | 168                        | 168        | 1890.80   | 2079.80       |

EN442 output at 20°C room temperature

\* Height 1 metre, 2 metres from the air exhaust grille.

Correction factors & pressure drop: see "Technical info" chapter

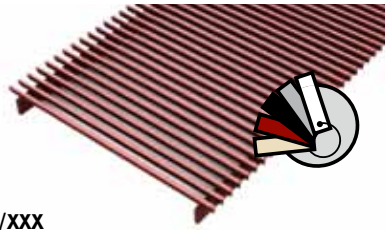
## OVERVIEW GRILLES

### Stainless steel grilles



SSS  
stainless steel

### Stainless steel grilles lacquered

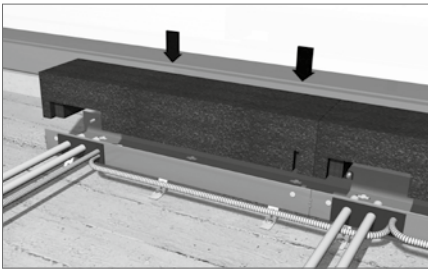


SSC/XXX  
stainless steel lacquered

To ensure perfect adherence of the lacquer coating, an extremely wear-resistant and UV-resistant polyester lacquer coating of the highest quality is used. Only in glossy (code 2..)

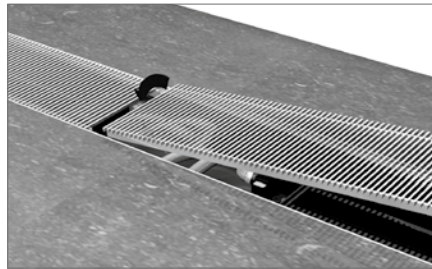
Complete installation and user manual see: [www.jaga.co.uk](http://www.jaga.co.uk)

## ASSEMBLY & PROTECTION BLOCK



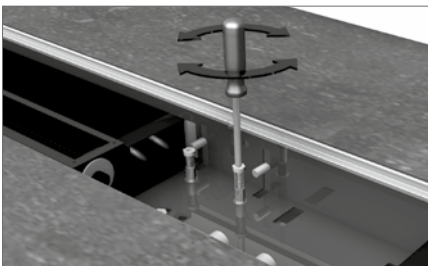
Install the polyethylene protective block(s) as protection on the construction site.

## DESIGN GRILLES



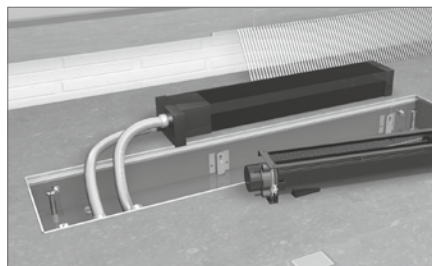
Continuous design grille of stainless steel grilles.

## HEIGHT CONTROL



Double height adjustment by means of the anchoring on the outer casing and by fine adjustment with the bolts in the inner housing (adjustable from 6.2 to 8 cm).

## FLEXIBLE CONNECTION



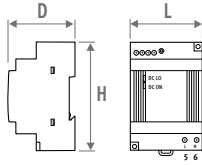
Stainless steel flexible hoses (15 to 25 cm), enabling the internal mechanism to be removed completely for easy cleaning.

# MICRO CANAL - OPTIONS

## POWER SUPPLY



The guarantee is only valid if the original Jaga power supply is used.



| Code     | H    | L   | D    |
|----------|------|-----|------|
| 7990.050 | 9.1  | 5.3 | 5.5  |
| 7990.051 | 9.1  | 7.1 | 5.5  |
| 7990.052 | 9.1  | 8.9 | 5.5  |
| 7990.053 | 12.5 | 8.3 | 11.6 |

- for DIN-rail or wall mounting
- safety: UL1310 Class 2
- output voltage between 24 - 28 VDC
- input voltage 90 - 264 VAC
- screw connection
- LED display  
green = on  
red = DC low power / short circuit

| CODE     | Output | Output    | £             |
|----------|--------|-----------|---------------|
|          | Watts  | current A |               |
| 7990.050 | 31     | 1.3       | <b>63.70</b>  |
| 7990.051 | 60     | 2.5       | <b>81.30</b>  |
| 7990.052 | 100    | 4.2       | <b>99.00</b>  |
| 7990.053 | 240    | 10        | <b>109.60</b> |

Required power = sum of the power consumption of the devices

### MAX. CABLE LENGTH (in metre)

| Number of ventilators | Min. cable thickness mm <sup>2</sup> |     |     |      |     |
|-----------------------|--------------------------------------|-----|-----|------|-----|
|                       | 2.5                                  | 1.5 | 1   | 0.75 | 0.5 |
| 5                     | 411                                  | 247 | 165 | 123  | 82  |
| 10                    | 206                                  | 123 | 82  | 62   | 41  |
| 15                    | 137                                  | 82  | 55  | 41   | 27  |
| 20                    | 103                                  | 62  | 41  | 31   | 21  |
| 25                    | 82                                   | 49  | 33  | 25   | 16  |
| 30                    | 68                                   | 41  | 27  | 21   | 14  |
| 35                    | 59                                   | 35  | 24  | 18   | 12  |
| 40                    | 51                                   | 31  | 21  | 15   | 10  |
| 45                    | 46                                   | 27  | 18  | 14   | 9   |
| 50                    | 41                                   | 25  | 16  | 12   | 8   |

Cable length in function of the number of fans (max. volt drop 5%)

## CONNECTION SET 24 VDC



| CODE     | Description                    | £            |
|----------|--------------------------------|--------------|
| 7990.210 | 180° - G1/2" F / NG 24V 2Watts | <b>94.60</b> |

- with varistor to protect against power surge
- with position indicator (open/closed)

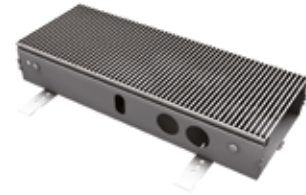
## JAGA TWO-WAY VALVE AND MOTOR 230V



| CODE     | Description                     | £            |
|----------|---------------------------------|--------------|
| 7990.409 | 180° - G1/2" F / NG 230V 2Watts | <b>59.50</b> |
| 7990.411 | 180° - G3/4" F / NG 230V 2Watts | <b>67.90</b> |

- only for mounting on the distributor, not in the Micro Canal!
- with varistor to protect against power surge
- with position indicator (open/closed)

## VALVE UNIT



- length 35 cm
- motorised thermostatic valve 24 VDC with lockshield
- outer casing with height control
- inner casing with stainless steel grille support
- stainless steel grille, natural coloured or lacquered
- protection block

| CODE                     | £             |
|--------------------------|---------------|
| 7522.00603514/SSS/VC     | <b>367.40</b> |
| 7522.00603514/SSC/.../VC | <b>403.80</b> |

fill in colour code

Jaga Thermostatic valve 5090.405  
motor 24 VDC



lockshield 5090.110

Dimensions of the valves, see "Connection sets & valves" chapter.

# MICRO CANAL - OPTIONS



## EMPTY HOUSING

To fill open spaces for a continuous installation



- outer casing with height control
- inner casing with stainless steel grille support
- stainless steel grille, natural coloured or lacquered
- protection block(s)
- 2 head pieces

### Empty housing with stainless steel grille

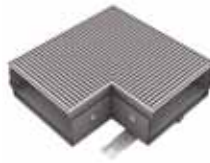
| CODE              | L   | £      |
|-------------------|-----|--------|
| 7522.00603514/SSS | 35  | 266.80 |
| 7522.00606014/SSS | 60  | 358.20 |
| 7522.00609514/SSS | 95  | 505.00 |
| 7522.00613014/SSS | 130 | 662.90 |
| 7522.00616514/SSS | 165 | 815.70 |
| 7522.00620014/SSS | 200 | 973.50 |

### Empty housing with lacquered stainless steel grille

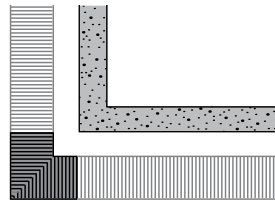
| CODE                   | L   | £       |
|------------------------|-----|---------|
| 7522.00603514/SSC/ ... | 35  | 293.50  |
| 7522.00606014/SSC/ ... | 60  | 422.00  |
| 7522.00609514/SSC/ ... | 95  | 599.10  |
| 7522.00613014/SSC/ ... | 130 | 788.30  |
| 7522.00616514/SSC/ ... | 165 | 973.50  |
| 7522.00620014/SSC/ ... | 200 | 1162.80 |

fill in colour code

## CORNER PIECE



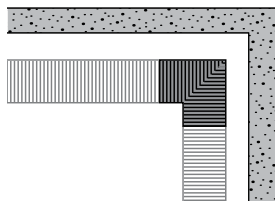
- aluminium grille in stainless steel effect (SSS), or lacquered in other Jaga colours (SSC)
- outer casing with anchorage elements
- polyethylene-protective mounting block(s)
- fully assembled inner housing with stainless steel grille support
- height adjustment with fine adjustment for alignment with the finished floor



### Inner corner

| CODE                     |           | £      |
|--------------------------|-----------|--------|
| 7522.00602014/SSS/01     | natural   | 246.90 |
| 7522.00602014/SSC/.../01 | lacquered | 271.20 |

fill in colour code

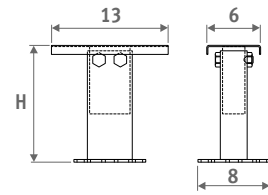


### Outer corner

| CODE                     |           | £      |
|--------------------------|-----------|--------|
| 7522.00602014/SSS/02     | natural   | 246.90 |
| 7522.00602014/SSC/.../02 | lacquered | 271.20 |

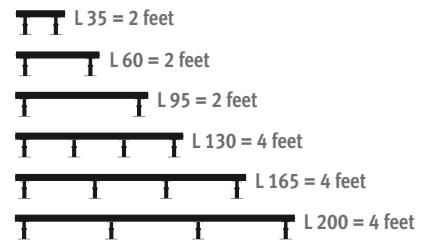
fill in colour code

## FEET WITH HEIGHT ADJUSTMENT FOR RAISED FLOORS



- lacquered in dark grey RAL 7024.
- easy installation by means of "stainless steel spring system"

### Number of feet per Micro Canal



| CODE          | H          | £/foot |
|---------------|------------|--------|
| 5207.05070000 | 5 > 7 cm   | 37.70  |
| 5207.08130000 | 8 > 13 cm  | 38.80  |
| 5207.13230000 | 13 > 23 cm | 40.90  |
| 5207.20300000 | 20 > 30 cm | 41.60  |

Jaga Heating Products (UK) Ltd  
Orchard Business Park  
Bromyard Road  
Ledbury, Herefordshire HR8 1LG

Tel.: +44 1531 631 533  
Fax: +44 1531 631 534  
E-mail: [jaga@jaga.co.uk](mailto:jaga@jaga.co.uk)

**[www.jaga.co.uk](http://www.jaga.co.uk)**

Jaga International  
Verbindingslaan z/n  
B-3590 Diepenbeek

Tel.: +32 11 29 41 16  
Fax: +32 11 29 41 60  
E-mail: [export@jaga.be](mailto:export@jaga.be)

WWW.  
**THE RADIATOR FACTORY**  
.COM

**[WWW.JAGAEXPERIENCELAB.COM](http://WWW.JAGAEXPERIENCELAB.COM)**

your partner:

